

# TEES MÉCANIQUE / Style 99

## QUIK-T™ TEES MÉCANIQUE

Pression de service max: 20 bar.  
Contactez Modgal pour les informations sur la pression de service pour la protection incendie.

## QUIK-T™ ANBOHRSCHELLEN

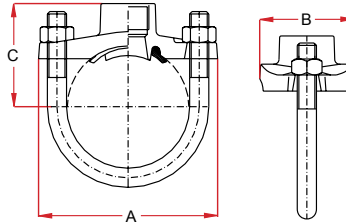
Maximaler Betriebsdruck: 20 bar  
Die Brandschutzzulassungen und die Zulassungsnenndrücke erhalten Sie bei Modgal.

## QUIK-T™ MECHANICAL TEES

Maximale werkdruk: 20 bar  
Contacteer Modgal voor toegelaten drukklassen voor brandbeveiligingstoepassingen.

## STYLE 99 QUIKLET™

Tê pour sprinkler / Sprinkler-T / Sprinkler Tee



Diamètre nominal (Pouce / DN)		Diamètre extérieur du tuyau	Sortie	Quik-T™ Dimensions			Diam. du trou Tolerance +1.6mm	Boulons			Poids Kg.	Certifications
Principal	Sortie			Type	A	B		C	No.	Dimension		
1 1/4" / 32	3/8" / 10	42.2	BSP	91.0	58.0	43.0	30.0	2	M10	65.0	0.36	-
	1/2" / 15	42.2	BSP / NPT	91.0	58.0	43.0	30.0	2	M10	65.0	0.36	FM / UL / VDS
	3/4" / 20	42.2	BSP / NPT	91.0	58.0	50.0	30.0	2	M10	65.0	0.41	FM / UL / VDS
	1" / 25	42.2	BSP / NPT	91.0	58.0	56.0	30.0	2	M10	65.0	0.44	FM / VDS
1 1/2" / 40	3/8" / 10	48.3	BSP	91.0	58.0	44.3	30.0	2	M10	65.0	0.36	-
	1/2" / 15	48.3	BSP / NPT	91.0	58.0	44.3	30.0	2	M10	65.0	0.36	FM / UL / VDS
	3/4" / 20	48.3	BSP / NPT	91.0	58.0	51.0	30.0	2	M10	65.0	0.38	FM / UL / VDS
	1" / 25	48.3	BSP / NPT	91.0	58.0	57.3	30.0	2	M10	65.0	0.42	FM / VDS
2" / 50	3/8" / 10	60.3	BSP	97.0	58.0	50.0	30.0	2	M10	80.0	0.38	-
	1/2" / 15	60.3	BSP / NPT	97.0	58.0	50.0	30.0	2	M10	80.0	0.38	FM / UL / VDS
	3/4" / 20	60.3	BSP / NPT	97.0	58.0	57.5	30.0	2	M10	80.0	0.40	FM / UL / VDS
	1" / 25	60.3	BSP / NPT	97.0	58.0	63.5	30.0	2	M10	110.0	0.44	FM / UL / VDS
2 1/2" / 65	1/2" / 15	76.1	BSP	112.0	57.0	63.5	30.0	2	M12	110.0	0.60	FM / UL / VDS
	3/4" / 20	76.1	BSP	112.0	57.0	64.5	30.0	2	M12	110.0	0.60	FM / UL / VDS
	1" / 25	76.1	BSP	112.0	57.0	72.5	30.0	2	M12	110.0	0.64	FM / UL / VDS