

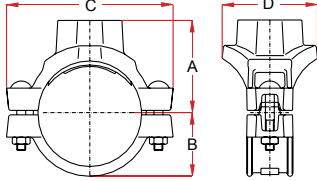
BRANCH OUTLETS / **Style 08T / 08G**

QUIK-T™ BRANCH OUTLETS

Maximum working pressure: 20 bar
For fire protection equipment and approved pressure ratings please contact Modgal.

STYLE 08T

Threaded / Gewinde / Draad

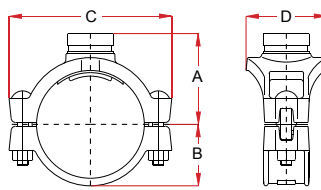


QUIK-T™ ANBOHRSCHELLEN

Maximaler Betriebsdruck: 20 bar
Die Brandschutzzulassungen und die Zulassungsnenndrücke erhalten Sie bei Modgal.

STYLE 08G

Grooved / Genutet / Gegroeft



QUIK-T™ MECHANICAL TEES

Maximale werkdruk: 20 bar
Contacteer Modgal voor toegelaten drukklassen voor brandbeveiligingstoepassingen.

| Nominal Size (Inches / DN) | | Pipe Outside Diameter | Outlet | | Quik-T™ Dimensions | | | | | Hole Diameter | Bolts | | | Weight Kg. | Approvals |
|----------------------------|-------------|-----------------------|--------|--------|--------------------|-------|-------|-------|-------|---------------|------------------|------|-------|------------|----------------------|
| Run | Outlet | | Size | Type | A | | B | C | D | | Tolerance +2.0mm | Qty. | Size | | |
| | | | | | Thrd. | Grv. | | | | | | | | | |
| 2" / 50 | 1/2" / 15 | 60.3 | 21.3 | T | 58.0 | - | 41.5 | 135.0 | 76.0 | 38.1 | 2 | M10 | 57.0 | 1.36 | FM / UL / LPCB / VDS |
| | 3/4" / 20 | 60.3 | 26.9 | T | 58.0 | - | 41.5 | 135.0 | 76.0 | 38.1 | 2 | M10 | 57.0 | 1.37 | FM / UL / LPCB / VDS |
| | 1" / 25 | 60.3 | 33.7 | T | 65.5 | - | 41.5 | 135.0 | 76.0 | 38.1 | 2 | M10 | 57.0 | 1.45 | FM / UL / LPCB / VDS |
| | 1 1/4" / 32 | 60.3 | 42.4 | T or G | 69.5 | 76.5 | 41.5 | 135.0 | 82.0 | 44.5 | 2 | M10 | 57.0 | 1.49 | FM / UL / LPCB / VDS |
| | 1 1/2" / 40 | 60.3 | 48.3 | T or G | 69.5 | 76.5 | 41.5 | 135.0 | 82.0 | 44.5 | 2 | M10 | 57.0 | 1.48 | FM / UL / LPCB / VDS |
| 2 1/2" / 65 | 1/2" / 15 | 76.1 | 21.3 | T | 67.0 | - | 48.0 | 150.0 | 92.0 | 38.1 | 2 | M12 | 76.0 | 1.82 | FM / UL / LPCB / VDS |
| | 3/4" / 20 | 76.1 | 26.9 | T | 69.0 | - | 48.0 | 150.0 | 92.0 | 38.1 | 2 | M12 | 76.0 | 1.78 | FM / UL / LPCB / VDS |
| | 1" / 25 | 76.1 | 33.7 | T | 72.0 | - | 48.0 | 150.0 | 92.0 | 38.1 | 2 | M12 | 76.0 | 1.75 | FM / UL / LPCB / VDS |
| | 1 1/4" / 32 | 76.1 | 42.4 | T or G | 76.0 | 82.0 | 48.0 | 150.0 | 92.0 | 50.8 | 2 | M12 | 76.0 | 1.72 | FM / UL / LPCB / VDS |
| | 1 1/2" / 40 | 76.1 | 48.3 | T or G | 76.0 | 82.0 | 48.0 | 150.0 | 92.0 | 50.8 | 2 | M12 | 76.0 | 1.81 | FM / UL / LPCB / VDS |
| 3" / 80 | 1/2" / 15 | 88.9 | 21.3 | T | 71.0 | - | 56.5 | 160.0 | 80.0 | 38.1 | 2 | M12 | 76.0 | 1.90 | FM / UL / LPCB / VDS |
| | 3/4" / 20 | 88.9 | 26.9 | T | 76.0 | - | 56.5 | 160.0 | 80.0 | 38.1 | 2 | M12 | 76.0 | 2.01 | FM / UL / LPCB / VDS |
| | 1" / 25 | 88.9 | 33.7 | T | 77.5 | - | 56.5 | 160.0 | 80.0 | 38.1 | 2 | M12 | 76.0 | 1.93 | FM / UL / LPCB / VDS |
| | 1 1/4" / 32 | 88.9 | 42.4 | T or G | 87.5 | 95.0 | 56.5 | 160.0 | 95.0 | 50.8 | 2 | M12 | 76.0 | 1.93 | FM / UL / LPCB / VDS |
| | 1 1/2" / 40 | 88.9 | 48.3 | T or G | 87.5 | 95.0 | 56.5 | 160.0 | 94.0 | 50.8 | 2 | M12 | 76.0 | 1.97 | FM / UL / LPCB / VDS |
| 4" OD | 2" / 50 | 88.9 | 60.3 | T or G | 90.0 | 95.0 | 56.5 | 160.0 | 105.0 | 63.5 | 2 | M12 | 76.0 | 2.20 | FM / UL / LPCB / VDS |
| 4" / 100 | 1 1/2" / 40 | 108.0 | 48.3 | T | 101.0 | - | 65.0 | 181.0 | 96.0 | 50.8 | 2 | M12 | 76.0 | 2.36 | VDS |
| | 1/2" / 15 | 114.3 | 21.3 | T | 87.0 | - | 69.0 | 187.0 | 96.0 | 38.1 | 2 | M12 | 76.0 | 2.25 | FM / LPCB / VDS |
| | 3/4" / 20 | 114.3 | 26.9 | T | 89.0 | - | 69.0 | 187.0 | 96.0 | 38.1 | 2 | M12 | 76.0 | 2.26 | FM / LPCB / VDS |
| | 1" / 25 | 114.3 | 33.7 | T | 92.0 | - | 69.0 | 187.0 | 96.0 | 38.1 | 2 | M12 | 76.0 | 2.23 | FM / LPCB / VDS |
| | 1 1/4" / 32 | 114.3 | 42.4 | T or G | 104.0 | 104.0 | 69.0 | 187.0 | 96.0 | 50.8 | 2 | M12 | 76.0 | 2.12 | FM / UL / LPCB / VDS |
| | 1 1/2" / 40 | 114.3 | 48.3 | T or G | 104.0 | 104.0 | 69.0 | 187.0 | 96.0 | 50.8 | 2 | M12 | 76.0 | 2.07 | FM / UL / LPCB / VDS |
| | 2" / 50 | 114.3 | 60.3 | T or G | 104.0 | 104.0 | 69.0 | 187.0 | 107.0 | 63.5 | 2 | M12 | 76.0 | 2.15 | FM / UL / LPCB / VDS |
| 5" / 125 | 2 1/2" / 65 | 114.3 | 76.1 | T or G | 104.0 | 104.0 | 69.0 | 187.0 | 106.0 | 69.8 | 2 | M12 | 76.0 | 2.53 | FM / UL / VDS |
| | 3" / 80 | 114.3 | 88.9 | T or G | 112.0 | 104.0 | 69.0 | 187.0 | 130.0 | 88.9 | 2 | M12 | 76.0 | 3.50 | FM / UL / VDS |
| | 1 1/4" / 32 | 139.7 | 42.4 | T or G | 118.5 | 119.0 | 81.5 | 216.0 | 100.0 | 50.8 | 2 | M16 | 89.0 | 3.20 | FM / VDS |
| | 1 1/2" / 40 | 139.7 | 48.3 | T or G | 118.5 | 119.0 | 81.5 | 216.0 | 100.0 | 50.8 | 2 | M16 | 89.0 | 3.23 | FM / VDS |
| | 2" / 50 | 139.7 | 60.3 | T or G | 120.5 | 119.0 | 81.5 | 216.0 | 106.0 | 63.5 | 2 | M16 | 89.0 | 3.37 | FM / VDS |
| 6" OD | 2 1/2" / 65 | 139.7 | 76.1 | G | - | 119.0 | 81.5 | 216.0 | 107.0 | 69.8 | 2 | M16 | 89.0 | 3.50 | FM / VDS |
| | 1 1/2" / 40 | 159.0 | 48.3 | T | 124.0 | - | 93.0 | 245.0 | 96.0 | 50.8 | 2 | M16 | 120.0 | 3.17 | VDS |
| | 1 1/4" / 32 | 165.1 | 42.4 | T or G | 126.5 | 128.5 | 93.0 | 245.0 | 96.0 | 50.8 | 2 | M16 | 120.0 | 3.69 | FM / LPCB |
| | 1 1/2" / 40 | 165.1 | 48.3 | T or G | 126.5 | 128.5 | 93.0 | 245.0 | 96.0 | 50.8 | 2 | M16 | 120.0 | 3.69 | FM / LPCB |
| 6" / 150 | 2" / 50 | 165.1 | 60.3 | T or G | 126.5 | 132.0 | 93.0 | 245.0 | 107.0 | 63.5 | 2 | M16 | 120.0 | 3.86 | FM / LPCB |
| | 2 1/2" / 65 | 165.1 | 76.1 | T or G | 135.0 | 129.0 | 93.0 | 245.0 | 107.0 | 69.8 | 2 | M16 | 120.0 | 4.23 | FM / LPCB |
| | 3" / 80 | 165.1 | 88.9 | T or G | 135.0 | 135.5 | 93.0 | 245.0 | 140.0 | 88.9 | 2 | M16 | 120.0 | 4.80 | FM / UL |
| | 4" / 100 | 165.1 | 114.3 | T or G | 143.0 | 137.0 | 96.0 | 245.0 | 156.0 | 114.3 | 2 | M16 | 120.0 | 6.80 | FM / UL |
| | 1 1/4" / 32 | 168.3 | 42.4 | T or G | 133.0 | 133.0 | 95.0 | 245.0 | 96.0 | 50.8 | 2 | M16 | 120.0 | 3.62 | FM / UL / LPCB / VDS |
| | 1 1/2" / 40 | 168.3 | 48.3 | T or G | 133.0 | 130.5 | 95.0 | 245.0 | 96.0 | 50.8 | 2 | M16 | 120.0 | 3.63 | FM / UL / LPCB / VDS |
| 8" / 200 | 2" / 50 | 168.3 | 60.3 | T or G | 130.0 | 131.5 | 95.0 | 245.0 | 107.0 | 63.5 | 2 | M16 | 120.0 | 3.92 | FM / UL / LPCB / VDS |
| | 2 1/2" / 65 | 168.3 | 76.1 | T or G | 140.5 | 132.5 | 95.0 | 245.0 | 107.0 | 69.8 | 2 | M16 | 120.0 | 4.05 | FM / UL / LPCB / VDS |
| | 3" / 80 | 168.3 | 88.9 | T or G | 137.5 | 138.5 | 95.0 | 247.0 | 140.0 | 88.9 | 2 | M16 | 120.0 | 4.85 | FM / UL / VDS |
| | 4" / 100 | 168.3 | 114.3 | T or G | 144.0 | 139.5 | 97.0 | 247.0 | 163.0 | 114.3 | 2 | M16 | 120.0 | 4.34 | FM / UL / LPCB / VDS |
| | 2" / 50 | 219.1 | 60.3 | T | 160.0 | - | 123.0 | 320.0 | 117.0 | 63.5 | 2 | M20 | 120.0 | 4.85 | LPCB |
| 8" / 200 | 2 1/2" / 65 | 219.1 | 76.1 | T or G | 157.5 | 155.0 | 123.0 | 320.0 | 120.0 | 69.8 | 2 | M20 | 120.0 | 4.75 | - |
| | 3" / 80 | 219.1 | 88.9 | T or G | 161.0 | 161.0 | 123.0 | 320.0 | 138.0 | 88.9 | 2 | M20 | 120.0 | 5.52 | VDS |
| | 4" / 100 | 219.1 | 114.3 | T or G | 171.0 | 161.0 | 123.0 | 320.0 | 164.0 | 114.3 | 2 | M20 | 120.0 | 5.59 | VDS |