

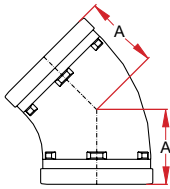
FITTINGS / Style 04 - 05 - 06 LONG RADIUS

GROOVED-END FITTINGS

Maximum working pressure: 34.5 bar
For fire protection equipment and approved pressure ratings please contact Modgal.

STYLE 04

Elbow 45° / Bogen 45° / Bocht 45°

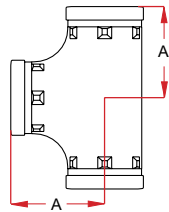


FITTINGS MIT GERIEFTEN ANSCHLUSS

Maximaler Betriebsdruck: 34.5 bar
Die Brandschutzzulassungen und die Zulassungs-nenn-drücke erhalten Sie bei Modgal.

STYLE 05

Equal Tee / T-Stück / Tee

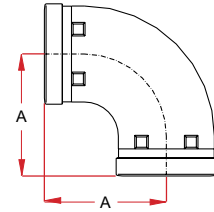


GEGROEFDE FITTINGEN

Maximale werkdruk: 34.5 bar
Contacteer Modgal voor toegelaten druk-
klassen voor brandbeveiligingstoepassingen.

STYLE 06

Elbow 90° / Bogen 90° / Bocht 90°



Nominal Size (Inches / DN)	Pipe Outside Diameter	Dimen- sion	Weight Kg.	Approvals
		A		
1" / 25	33.7	-	-	-
1¼" / 32	42.4	44.5	0.38	UL / VDS
1½" / 40	48.3	44.5	0.45	FM / UL / VDS
2" / 50	60.3	51.0	0.64	FM / UL / VDS
2½" / 65	76.1	57.0	1.00	FM / UL / VDS
3" / 80	88.9	63.5	1.50	FM / UL / VDS
4" OD	108.0	-	-	-
4" / 100	114.3	76.0	2.55	FM / UL / VDS
5" OD	133.0	82.5	3.50	-
5" / 125	139.7	82.2	3.80	VDS
6" OD	159.0	11.9	5.40	VDS
6" OD	165.1	89.0	5.60	UL
6" / 150	168.3	89.0	5.70	FM / UL / VDS
8" / 200	219.1	108.0	11.20	FM / UL / VDS
10" / 250	273.0	120.0	15.00	VDS
12" / 300	323.9	-	-	-
14" / 350	355.6	-	-	-
16" / 400	406.4	-	-	-

For use with higher than stated maximum working pressure, please contact Modgal Metal.

Nominal Size (Inches / DN)	Pipe Outside Diameter	Dimen- sion	Weight Kg.	Approvals
		A		
1" / 25	33.7	-	-	-
1¼" / 32	42.4	-	-	-
1½" / 40	48.3	-	-	-
2" / 50	60.3	82.5	0.98	FM / UL LPCB / VDS
2½" / 65	76.1	95.0	1.81	FM / UL LPCB / VDS
3" / 80	88.9	108.0	2.46	FM / UL LPCB / VDS
4" OD	108.0	127.0	3.80	FM / UL VDS
4" / 100	114.3	127.0	4.00	FM / UL LPCB / VDS
5" OD	133.0	140.0	4.64	VDS
5" / 125	139.7	140.0	6.63	FM / UL LPCB / VDS
6" OD	159.0	-	-	-
6" OD	165.1	165.0	8.80	UL / LPCB
6" / 150	168.3	165.0	9.15	FM / UL LPCB / VDS
8" / 200	219.1	196.0	16.65	FM / UL LPCB / VDS
10" / 250	273.0	229.0	36.20	FM / UL VDS
12" / 300	323.9	254.0	50.20	UL
14" / 350	355.6	282.0	63.50	-
16" / 400	406.4	305.0	106.00	-

Für den Einsatz mit höheren Drücken, als dem angegebenen maximalen Betriebsdruck, kontaktieren Sie bitte Modgal Metal.

Nominal Size (Inches / DN)	Pipe Outside Diameter	Dimen- sion	Weight Kg.	Approvals
		A		
1" / 25	33.7	-	-	-
1¼" / 32	42.4	64.0	0.45	FM / UL VDS
1½" / 40	48.3	-	-	-
2" / 50	60.3	82.5	0.71	FM / UL LPCB / VDS
2½" / 65	76.1	95.0	1.36	FM / UL LPCB / VDS
3" / 80	88.9	108.0	1.70	FM / UL LPCB / VDS
4" OD	108.0	127.0	2.60	FM / UL VDS
4" / 100	114.3	127.0	2.70	FM / UL LPCB / VDS
5" OD	133.0	140.0	3.27	VDS
5" / 125	139.7	140.0	4.30	UL / LPCB VDS
6" OD	159.0	-	-	-
6" OD	165.1	165.0	6.00	UL / LPCB
6" / 150	168.3	165.0	5.82	FM / UL LPCB / VDS
8" / 200	219.1	196.0	10.60	FM / UL LPCB / VDS
10" / 250	273.0	229.0	26.60	FM / UL VDS
12" / 300	323.9	254.0	37.00	UL
14" / 350	355.6	282.0	45.50	-
16" / 400	406.4	305.0	80.00	-

Voor gebruik met hogere dan aangegeven maximale werkdruk, neem a.u.b. contact op met Modgal Metal.