

FITTINGS / Style 42 - 91

GROOVED-END FITTINGS

Maximum working pressure: 34.5 bar
For fire protection equipment and approved pressure ratings please contact Modgal.

STYLE 42

Elbow 22½° / Bogen 22½° / Bocht 22½°



FITTINGS MIT GERIEFTEN ANSCHLUSS

Maximaler Betriebsdruck: 34.5 bar
Die Brandschutzzulassungen und die Zulassungsennendrücke erhalten Sie bei Modgal.

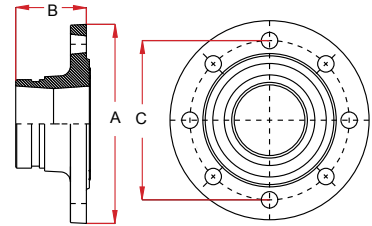
STYLE 91

Grooved Flange Adaptor / Geriefter Flanschadapter / Gegroefde Flens Adapter



GEGROEFDE FITTINGEN

Maximale werkdruk: 34.5 bar
Contacteer Modgal voor toegelaten drukklassen voor brandbeveiligingstoepassingen.



Nominal Size (Inches / DN)	Pipe Outside Diameter	Dimension		Weight Kg.	Approvals
		A			
1¼" / 32	42.4	45.0	0.30	-	
1½" / 40	48.3	45.0	0.34	FM	
2" / 50	60.3	48.0	0.53	FM	
2½" / 65	76.1	51.0	0.83	FM	
3" / 80	88.9	57.0	1.10	FM	
4" / 100	114.3	73.0	1.90	FM	
5" / 125	139.7	79.0	2.80	FM	
6" OD	165.1	79.0	3.90	FM	
6" / 150	168.3	79.0	4.74	FM	
8" / 200	219.1	98.0	7.40	FM	

Nominal Size (Inches / DN)	Pipe Outside Diameter	Dimensions			Standards		Bolts		Weight Kg.	Approvals
		A	B	C	ISO 7005-2	ANSI	Qty.	Size		
2" / 50	60.3	165.0	65.0	125.0	PN10 PN16	-	4	M16	1.50	FM / UL / VDS
2½" / 65	76.1	185.0	65.0	142.5	PN10 PN16	-	4	M16	1.85	FM / UL / VDS
3" / 80	88.9	200.0	65.0	160.0	PN10 PN16	-	8	M16	1.98	FM / UL / VDS
3" / 80	88.9	192.0	65.0	152.5	-	ASA150	4	⅝"	2.00	FM / UL
4" / 100	114.3	229.0	70.0	190.5	-	ASA150	8	⅝"	2.40	FM / UL
4" / 100	114.3	220.0	70.0	180.0	PN10 PN16	-	8	M16	2.40	FM / UL / VDS
5" / 125	139.7	250.0	70.0	210.0	PN10 PN16	-	8	M16	3.10	FM / UL / VDS
6" OD	165.1	282.0	70.0	240.0	PN10 PN16	-	8	M20	3.96	FM / UL
6" / 150	168.3	284.0	70.0	240.0	-	ASA150	8	¾"	3.96	FM / UL
6" / 150	168.3	284.0	70.0	240.0	PN10 PN16	-	8	M20	3.96	FM / UL / VDS
8" / 200	219.1	343.0	75.0	295.0	PN16	-	12	M20	10.50	FM / UL / VDS
8" / 200	219.1	343.0	75.0	295.0	-	ASA150	8	¾"	10.50	FM / UL
10" / 250	273.0	405.0	85.0	355.0	PN16	-	12	M24	15.00	FM / UL / VDS
10" / 250	273.0	395.0	85.0	350.0	PN10	-	12	M20	13.50	FM / UL / VDS
12" / 300	323.0	460.0	90.0	410.0	PN16	-	12	M24	13.10	FM / UL

For use with higher than stated maximum working pressure, please contact Modgal Metal.

Für den Einsatz mit höheren Drücken, als dem angegebenen maximalen Betriebsdruck, kontaktieren Sie bitte Modgal Metal.

Voor gebruik met hogere dan aangegeven maximale werkdruk, neem a.u.b. contact op met Modgal Metal.