

BRANCH OUTLETS / Style 99

QUIK-T™ BRANCH OUTLETS

Maximum working pressure: 20 bar
For fire protection equipment and approved pressure ratings please contact Modgal.

QUIK-T™ ANBOHRSCHELLEN

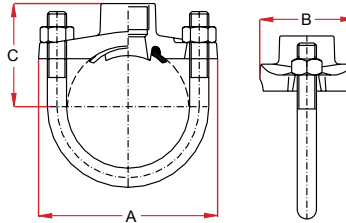
Maximaler Betriebsdruck: 20 bar
Die Brandschutzzulassungen und die Zulassungsnenndrücke erhalten Sie bei Modgal.

QUIK-T™ MECHANICAL TEES

Maximale werkdruk: 20 bar
Contacteer Modgal voor toegelaten drukklassen voor brandbeveiligingstoepassingen.

STYLE 99 QUIKLET™

Sprinkler Fitting / Sprinkler-T / Sprinkler Tee



| Nominal Size (Inches / DN) | | Pipe Outside Diameter | Outlet Type | Quik-T™ Dimensions | | | Hole Diameter Tolerance +1.6mm | U-Bolt | | | Weight Kg. | Approvals |
|----------------------------|-----------|-----------------------|-------------|--------------------|------|------|--------------------------------|----------|------|--------|------------|---------------|
| Run | Outlet | | | A | B | C | | Nut Qty. | Size | Length | | |
| 1 1/4" / 32 | 3/8" / 10 | 42.2 | BSP | 91.0 | 58.0 | 43.0 | 30.0 | 2 | M10 | 65.0 | 0.36 | - |
| | 1/2" / 15 | 42.2 | BSP / NPT | 91.0 | 58.0 | 43.0 | 30.0 | 2 | M10 | 65.0 | 0.36 | FM / UL / VDS |
| | 3/4" / 20 | 42.2 | BSP / NPT | 91.0 | 58.0 | 50.0 | 30.0 | 2 | M10 | 65.0 | 0.41 | FM / UL / VDS |
| | 1" / 25 | 42.2 | BSP / NPT | 91.0 | 58.0 | 56.0 | 30.0 | 2 | M10 | 65.0 | 0.44 | FM / VDS |
| 1 1/2" / 40 | 3/8" / 10 | 48.3 | BSP | 91.0 | 58.0 | 44.3 | 30.0 | 2 | M10 | 65.0 | 0.36 | - |
| | 1/2" / 15 | 48.3 | BSP / NPT | 91.0 | 58.0 | 44.3 | 30.0 | 2 | M10 | 65.0 | 0.36 | FM / UL / VDS |
| | 3/4" / 20 | 48.3 | BSP / NPT | 91.0 | 58.0 | 51.0 | 30.0 | 2 | M10 | 65.0 | 0.38 | FM / UL / VDS |
| | 1" / 25 | 48.3 | BSP / NPT | 91.0 | 58.0 | 57.3 | 30.0 | 2 | M10 | 65.0 | 0.42 | FM / VDS |
| 2" / 50 | 3/8" / 10 | 60.3 | BSP | 97.0 | 58.0 | 50.0 | 30.0 | 2 | M10 | 80.0 | 0.38 | - |
| | 1/2" / 15 | 60.3 | BSP / NPT | 97.0 | 58.0 | 50.0 | 30.0 | 2 | M10 | 80.0 | 0.38 | FM / UL / VDS |
| | 3/4" / 20 | 60.3 | BSP / NPT | 97.0 | 58.0 | 57.5 | 30.0 | 2 | M10 | 80.0 | 0.40 | FM / UL / VDS |
| | 1" / 25 | 60.3 | BSP / NPT | 97.0 | 58.0 | 63.5 | 30.0 | 2 | M10 | 110.0 | 0.44 | FM / UL / VDS |
| 2 1/2" / 65 | 1/2" / 15 | 76.1 | BSP | 112.0 | 57.0 | 63.5 | 30.0 | 2 | M12 | 110.0 | 0.60 | FM / UL / VDS |
| | 3/4" / 20 | 76.1 | BSP | 112.0 | 57.0 | 64.5 | 30.0 | 2 | M12 | 110.0 | 0.60 | FM / UL / VDS |
| | 1" / 25 | 76.1 | BSP | 112.0 | 57.0 | 72.5 | 30.0 | 2 | M12 | 110.0 | 0.64 | FM / UL / VDS |